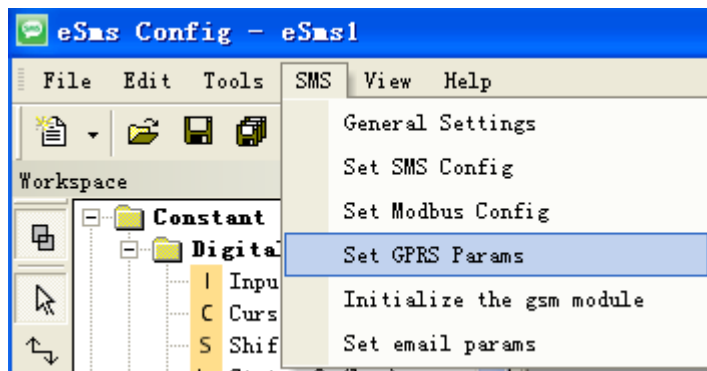
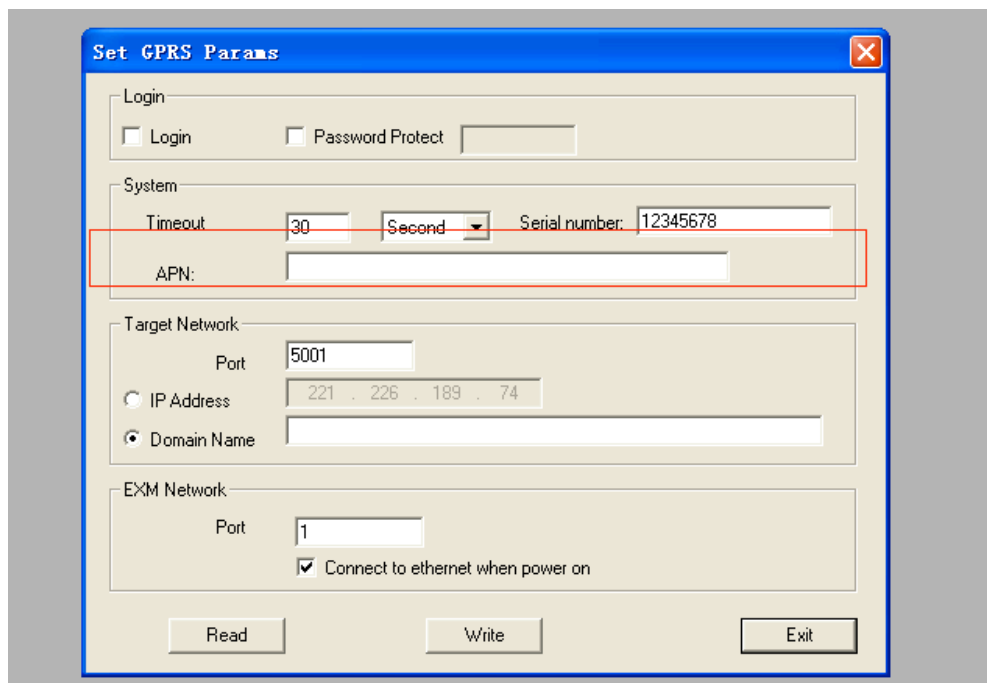


Step A: Enable the GPRS function via click the menu SMS->Set GPRS param.(The communication port must be opened, and then this step would be available.)

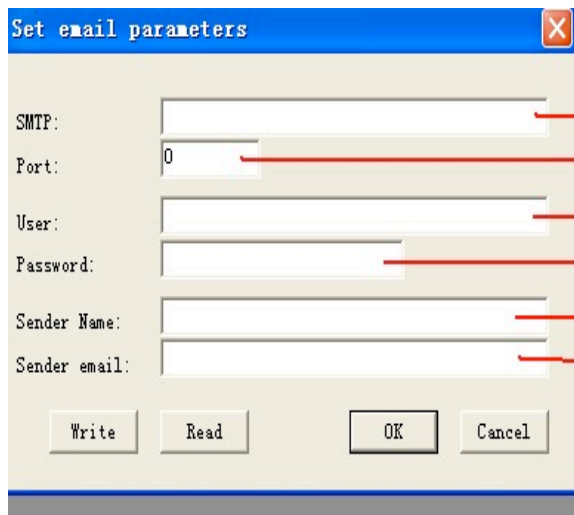
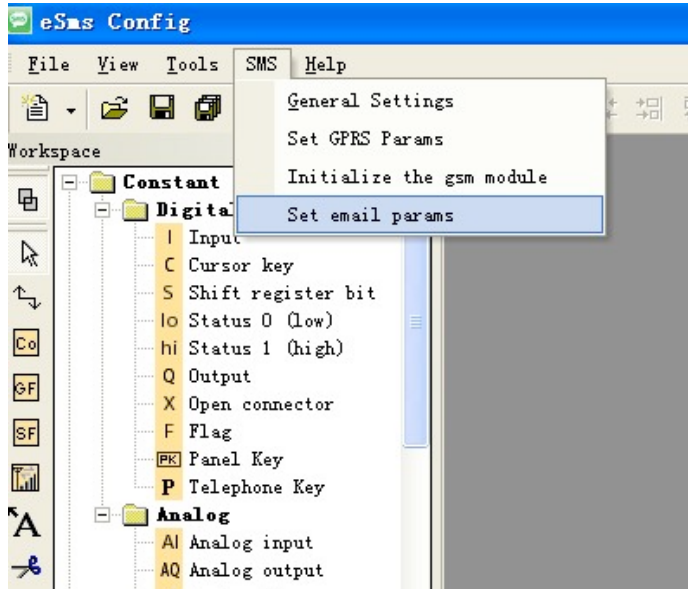


Configure the APN based on your SIM card and then click "Write" to download the configuration into x-Messenger.



Step B: Do some configurations about email items

Click menu SMS->Set email params



- Set the address of SMTP Server
- Set the port of SMTP Server
- Set the user name for authentication
- Set the password for authentication
- Set the sender's name
- Set the email address of the sender

Click "Write" button to download the parameters into x-Messenger

The receiver email address and the alarm text can be edit in the "sms message output" function block..

